



ASSEMBLY TOOLS AND SYSTEMS



Electric
Screwdrivers



DC Controlled screwdrivers

Torque Control System

A new way to optimize your tightening process



- Replace up to 8 Screwdrivers on your work bench thanks to 8 programmable digital Torque / Speed / Angle settings selectable through I/O or sensor ports.
- Set up to 8 counting programs with up to 20 screws each with different torque targets.

Best choice for Cell line Manufacturing



Easy PC Communication through USB Port



Screw counter inside (detect cross thread, screw omission...)



Tightening process management through 25P I/O port or sensor port



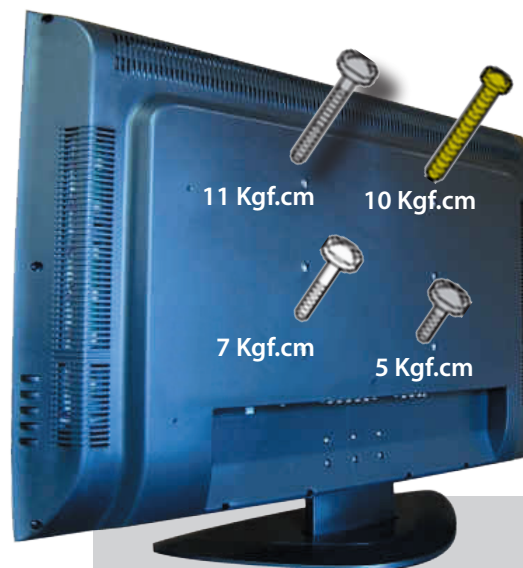
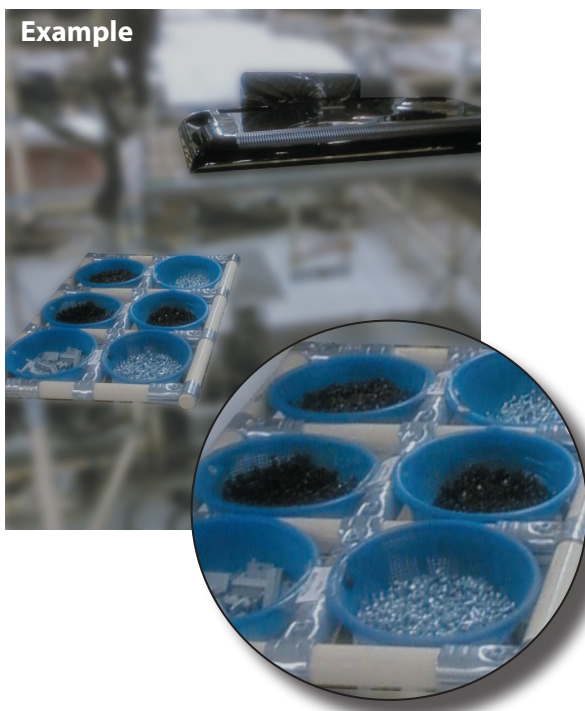
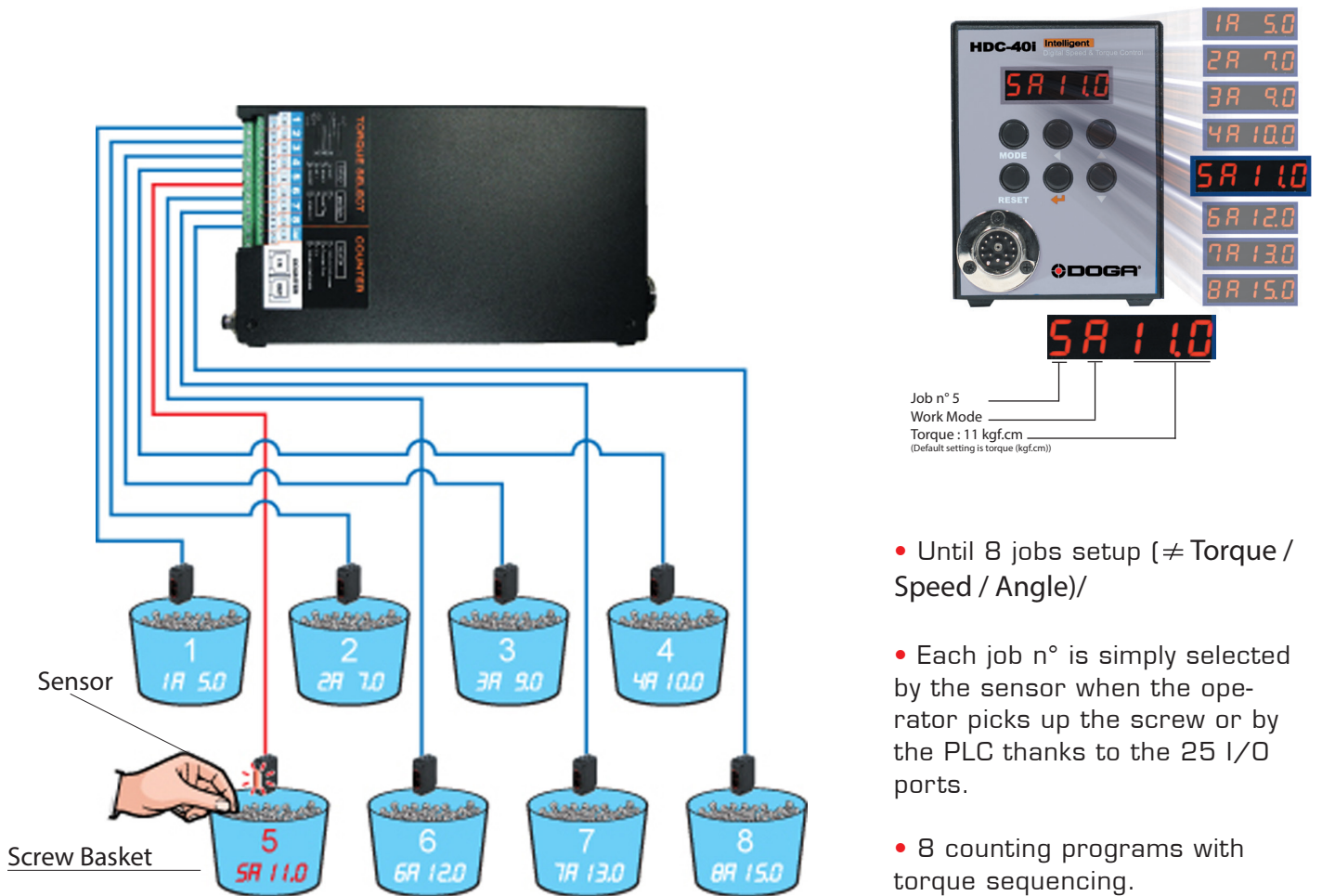
Built-in 32 Bit microprocessor



Data monitoring & Quality Control



Example of job selection through sensors



8 different jobs with one Hybrid screw driver.

Jobs may be selected as well through PLC, socket tray...



DC Controlled screwdrivers

HD Series

0,3 to 9,8 NM



- Brushless DC motor (service free)
- ESD free by body grounding
- Torque repeatability ~ 7%
- Inside memory chip for tool data and recognition
- Built - in air clutch
- Angle monitoring
- Sequencing programs

PHD100N-A/D

HD100N-A

HD220A

HD150PA

40 Volts hybrid screwdrivers

0,3 - 4,4 Nm

| Model | Torque Range (Nm) | Speed rotation (rpm) | Drive | Starting system | Weight (Kg) | Code |
|-----------|-------------------|----------------------|----------|-----------------|-------------|-----------|
| HD081A | 0,3 - 0,78 | 1000 to 1700 | Hex 1/4" | Lever | 0,44 | 6-1058880 |
| HD150A-G | 0,5 - 1,5 | 500 to 1800 | Hex 1/4" | Lever | 0,44 | 6-1027470 |
| HD220A-G | 0,7 - 2,2 | 400 to 1250 | Hex 1/4" | Lever | 0,44 | 6-1027471 |
| HD450A-G | 0,98 - 4,4 | 300 to 600 | Hex 1/4" | Lever | 0,51 | 6-1027472 |
| HD150PA-G | 0,5 - 1,5 | 500 to 1800 | Hex 1/4" | Push to start | 0,44 | 6-1027473 |
| HD220PA-G | 0,7 - 2,2 | 400 to 1250 | Hex 1/4" | Push to start | 0,44 | 6-1027475 |
| HD450PA-G | 0,98 - 4,4 | 300 to 600 | Hex 1/4" | Push to start | 0,51 | 6-1027474 |

Standard packing : screwdriver, 14P-3M cable, test bits.

40 Volts hybrid spindles

0,5 - 4,4 Nm

| Model | Torque Range (Nm) | Speed rotation (rpm) | Drive | Starting system | Weight (Kg) | Code |
|---------|-------------------|----------------------|----------|-----------------|-------------|-----------|
| HDA150A | 0,5 - 1,5 | 500 to 1800 | Hex 1/4" | Remote | 0,44 | 6-1042224 |
| HDA220A | 0,7 - 2,2 | 400 to 1250 | Hex 1/4" | Remote | 0,44 | 6-1042225 |
| HDA450A | 0,98 - 4,4 | 300 to 600 | Hex 1/4" | Remote | 0,51 | 6-1042226 |

Standard packing : screwdriver, 14P-3M cable, test bits.

35 Volts hybrid screwdrivers

1,17 - 9,8 Nm

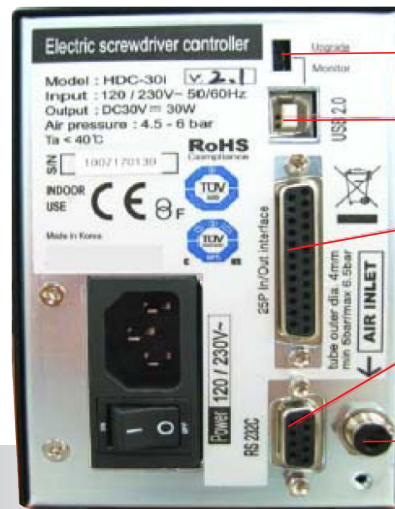
| Model | Torque Range (Nm) | Speed rotation (rpm) | Drive | Starting system | Shape | Weight (Kg) | Code |
|---------------|-------------------|----------------------|----------|-----------------|----------|-------------|-----------|
| HD35N-A | 1,17 to 3,4 | 500 to 1500 | Hex 1/4" | Lever | Straight | 0,7 | 6-1077880 |
| HD50N-A | 1,47 to 4,9 | 300 to 1000 | Hex 1/4" | Lever | Straight | 0,7 | 6-1077881 |
| HD100N-A | 3 to 9,8 | 300 to 700 | Hex 1/4" | Lever | Straight | 0,75 | 6-1077882 |
| HD35NP-A | 1,17 to 3,4 | 500 to 1500 | Hex 1/4" | Push to start | Straight | 0,7 | 6-1070035 |
| HD50NP-A | 1,47 to 4,9 | 300 to 1000 | Hex 1/4" | Push to start | Straight | 0,7 | 6-1070036 |
| PHD35N-A/U* | 1,17 to 3,4 | 500 to 1500 | Hex 1/4" | Trigger | Pistol | 0,82 | 6-1070032 |
| PHD50N-A/U* | 1,47 to 4,9 | 300 to 1000 | Hex 1/4" | Trigger | Pistol | 0,82 | 6-1070033 |
| PHD100N-A/U* | 3 to 9,8 | 300 to 700 | Hex 1/4" | Trigger | Pistol | 0,86 | 6-1070034 |
| PHD35N-A/D** | 1,17 to 3,4 | 500 to 1500 | Hex 1/4" | Trigger | Pistol | 0,82 | 6-1070040 |
| PHD50N-A/D** | 1,47 to 4,9 | 300 to 1000 | Hex 1/4" | Trigger | Pistol | 0,82 | 6-1070041 |
| PHD100N-A/D** | 3 to 9,8 | 300 to 700 | Hex 1/4" | Trigger | Pistol | 0,86 | 6-1070042 |

Standard packing : screwdriver, 14P-3M cable, test bits.

* : Top exit cable

** : handle exit cable

Controllers



- Com port usage selector
- USB Port for PC communication or firmware upgrade
- 25P I/O interface
- RS-232C Port
- Air pressure inlet (out dia 4 mm)

HDC-40i/HDC-35i

- Delivered with USB Com cable, air filter, air hose.

| No | ITEM | SPECIFICATION | |
|----|--|---|---------------------------------------|
| 1 | Model | HDC-40i - 6-1042211 for HD40 V | HDC-35i - 6-1077883 for HD35 V |
| 2 | Input | Electric | AC120VC or AC220V, 50~60 Hz |
| 3 | | Air pressure | Min 5 bar/Max 6,5 bar |
| 4 | Output | Electric | DC40V, 3A DC35V, 3A |
| 5 | Fuse | | AC250V, 10A AC250V, 5A |
| 6 | Dimension/Weight | 97(w) 222(d) 129(h) mm / 2,1kg | 104(w) 226,4(d) 144(h)mm / 2,6 Kg |
| 7 | Job parameters | Torque, Speed, Angle, Soft start, Torque tuning in 8 preset numbers | |
| 8 | Job selection | 1) Front panel button 2) 25P I/O interface 3) F1 button on the driver | |
| 9 | Torque Calibration | From - 20% to +20% | |
| 10 | Auto detection of the connected Driver | Auto detection of the offset value from the EEP-rom inside the driver | |
| 11 | Error display | Error display by code no. in system, communication & pattern error group | |
| 12 | Fastening quality control | OK/NG monitoring of screw fastening by preset pattern of angles, times | |
| 13 | Screw Counter | Save the total screw number, and monitor the number of OK fastenings. | |
| 14 | Monitoring and parameter | Monitoring and parameter settings on PC program (MS Windows base) | |
| 15 | Communication port | USB or RS232C (option) | |
| 16 | Built in counter program | 8 counting programs, 20 screws per program. Auto-sequencing of fastening strategies. | |

Accessories



Standard :

Driver Cable 14p 3M
Code : 6-1042205
(delivered with the tool)



USB Com Cable
Code : 6-1042213
(delivered with the controller)



Pistol Grip for HD-G 40 V
Code : 6-1042210
I/O sub-D25 male cable
Code : 4-3003000

Option :



Angle head kit for HD-G 40 V
Code : 6-1000251



DC Controlled screwdrivers

SD Series 

0,016 to 2,7 NM



- 24V Swiss DC Servo motor
- Over 5 millions cycles of life expectancy
- Torque accuracy 10 % in full scale
- Torque repeatability $\pm 3\%$
- 190 - 1000 rpm Speed control (scale : 50 rpm)
- 8 programs memory
- Real time monitoring - torque, rpm, angle
- ESD free with conductive material
- Suitable for clean room
- Real time torque and angle curve

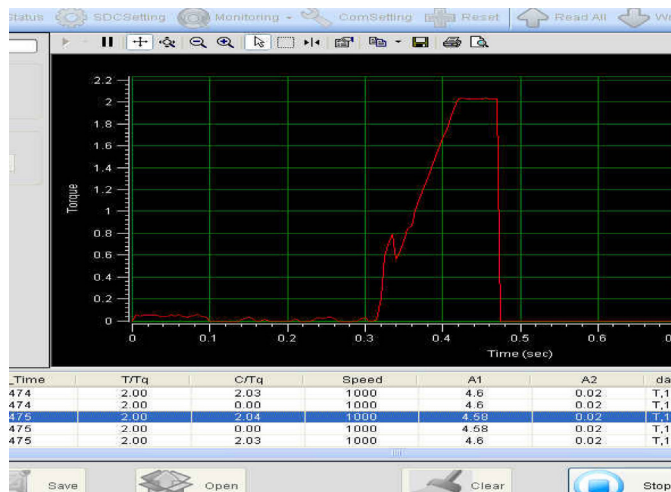
| Model | Starting system | Torque Range (Nm) | Speed Rotation (rpm) | Drive | Weight (Kg) | Controller | Code |
|-----------|-----------------|-------------------|----------------------|----------------|-------------|------------|-----------|
| SD 120 Z | Remote | 0,016 - 0,15 | 240 to 1000 | Half-moon 4 mm | 0,46 | SDC-24 | 6-1000235 |
| SD 200 Z | Remote | 0,05 - 0,2 | 420 to 1000 | Half-moon 4 mm | 0,46 | SDC-24 | 6-1000236 |
| SD 300 Z | Remote | 0,1 - 0,3 | 360 to 890 | Half-moon 4 mm | 0,46 | SDC-24 | 6-1000237 |
| SDA 120 | Remote | 0,016 - 0,15 | 240 to 1000 | Half-moon 4 mm | 0,46 | SDC-24 | 6-1000238 |
| SDA 200 | Remote | 0,05 - 0,2 | 420 to 1000 | Half-moon 4 mm | 0,46 | SDC-24 | 6-1000239 |
| SDA 300 | Remote | 0,1 - 0,3 | 360 to 890 | Half-moon 4 mm | 0,46 | SDC-24 | 6-1000240 |
| SDA 600-A | Remote | 0,15 - 0,6 | 190 to 710 | 1/4" Hex | 0,46 | SDC-24 | 6-1088880 |
| SDA1000-A | Remote | 0,19 - 0,98 | 130 to 430 | 1/4" Hex | 0,67 | SDC-24 | 6-1000246 |
| SDA 05N | Remote | 0,11 - 0,48 | 300 to 1000 | Half-moon 4 mm | 0,68 | SDC-40 | 6-1000266 |
| SDA 09 N | Remote | 0,15 - 0,87 | 300 to 1000 | Half-moon 4 mm | 0,69 | SDC-40 | 6-1000267 |
| SDA 18N-A | Remote | 0,4 - 1,7 | 300 to 1000 | Hex 1/4" | 0,75 | SDC-40 | 6-1041800 |
| SDA28N-A | Remote | 0,5 - 2,7 | 190 to 1000 | Hex 1/4" | 0,75 | SDC-40 | 6-1000248 |
| SD 120 | Lever | 0,03 - 0,15 | 240 to 1000 | Half-moon 4 mm | 0,26 | SDC-24 | 6-1000241 |
| SD 200 | Lever | 0,05 - 0,2 | 420 to 1000 | Half-moon 4 mm | 0,3 | SDC-24 | 6-1000242 |
| SD 300 | Lever | 0,1 - 0,3 | 360 to 890 | Half-moon 4 mm | 0,3 | SDC-24 | 6-1000243 |
| SD 600-A | Lever | 0,15 - 0,6 | 190 to 710 | 1/4" Hex | 0,33 | SDC-24 | 6-1077801 |
| SD1000-A | Lever | 0,19 - 0,98 | 130 to 430 | 1/4" Hex | 0,38 | SDC-24 | 6-1077800 |
| SD1500-A | Lever | 0,3 - 1,47 | 120 to 430 | 1/4" Hex | 0,38 | SDC-24 | 6-1000596 |
| SD05N | Lever | 0,11 - 0,48 | 300 to 1000 | Half-moon 4 mm | 0,64 | SDC-40 | 6-1000268 |
| SD09N | Lever | 0,15 - 0,87 | 300 to 1000 | Half-moon 4 mm | 0,65 | SDC-40 | 6-1000269 |
| SD18N-A | Lever | 0,4 - 1,7 | 300 to 1000 | Hex 1/4" | 0,75 | SDC-40 | 6-1000252 |
| SD28N-A | Lever | 0,5 - 2,7 | 190 to 1000 | Hex 1/4" | 0,75 | SDC-40 | 6-1000253 |

Z : fixtured spindle with Offset

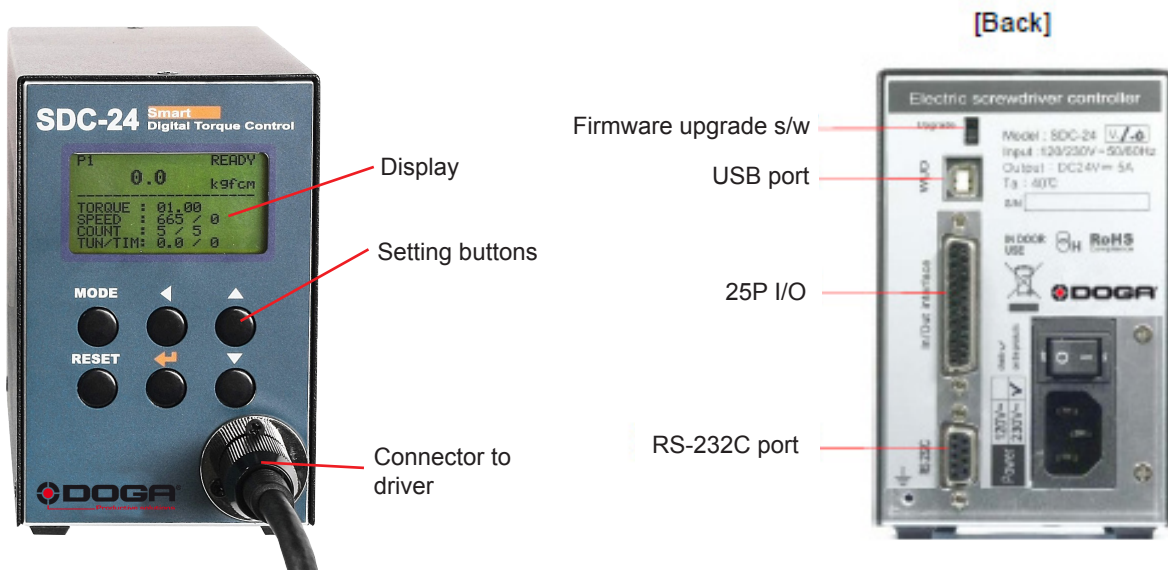
SDA : fixtured spindle

SD : hand held, lever start

Real time torque & angle curve



Controller



SDC-24 or SDC-40

| No | Item | SDC-24 Code 6-1000245 | SDC-40 Code 6-1041801 |
|----|----------------------------------|--|--------------------------|
| 1 | Input | AC120VC or AC220V, 50-60Hz | |
| 2 | Output | DC24V, 5A | DC40V, 3A |
| 3 | Control Range | Torque | 0,1 - 1,47 Nm |
| | | Speed | 100 - 1,000 rpm |
| | | Angle | 0,4° step |
| 4 | Preset parameters | Torque, (Speed) & Angle | |
| 5 | Preset # selecting | 1) Front panel button 2) 25P I/O interface | |
| 6 | Torque calibration | -10% - + 10% | |
| 7 | Auto recognition | Auto detection of connected driver when power ON of controller | |
| 8 | Error display | Error code display (3 groups) | |
| 9 | Fastening quality control | Fastening data verification (NG/OK) against the pre-setting pattern of angle | |
| 10 | Screw counter | Total 8 programs of tightening screw number and sequence | |
| 11 | Parameter setting and monitoring | MS Windows PC software, Smart-Manager of front panel | |

ACCESSORIES : (delivered with the controller)
 - Driver cable SD 10 PC, 3 M **Code : 6-1074440**
 - USB com cable **Code : 6-1042213**

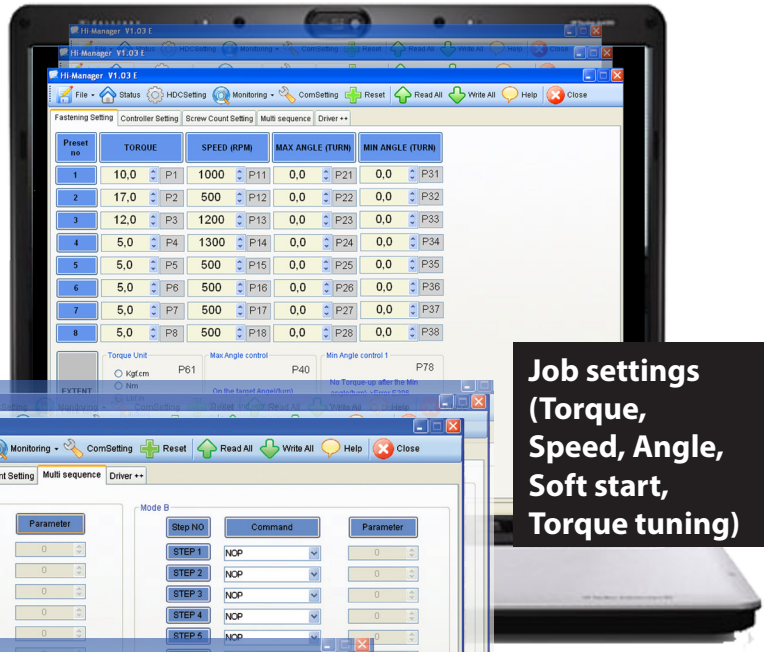
OPTION :
 - 5 meters tool cable **Code : 6-1074420**
 - I/O sub-d25 male cable **Code : 4-3003000**



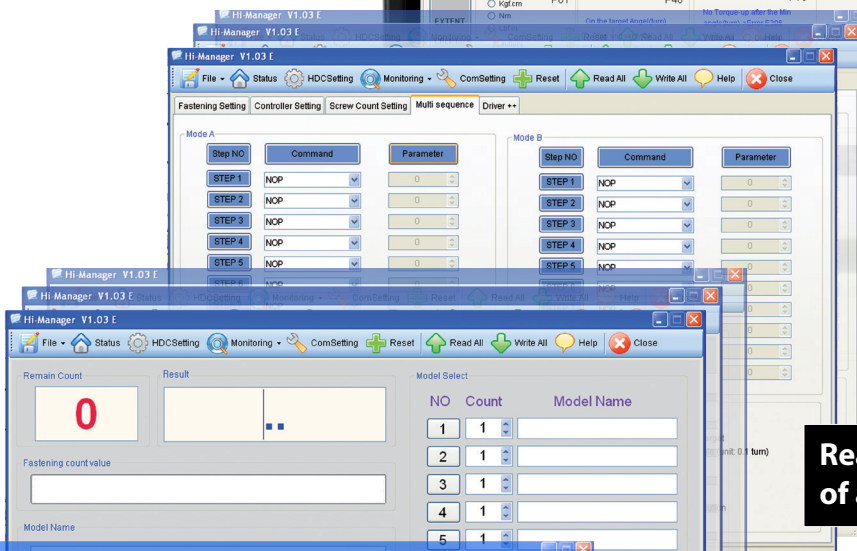
Software

Smart Manager (SD Series)/Hi-Manager (HD Series)

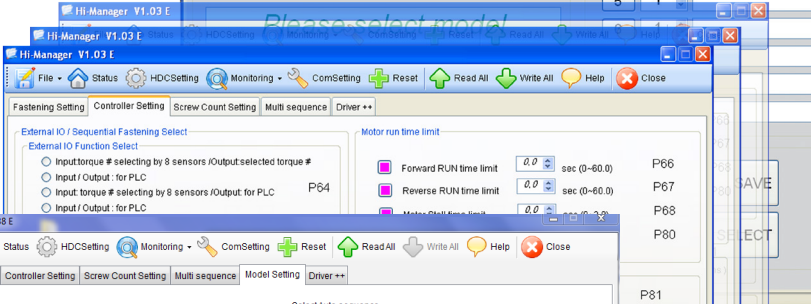
Set and monitor your tool,
your tightening environment on
free PC Software,



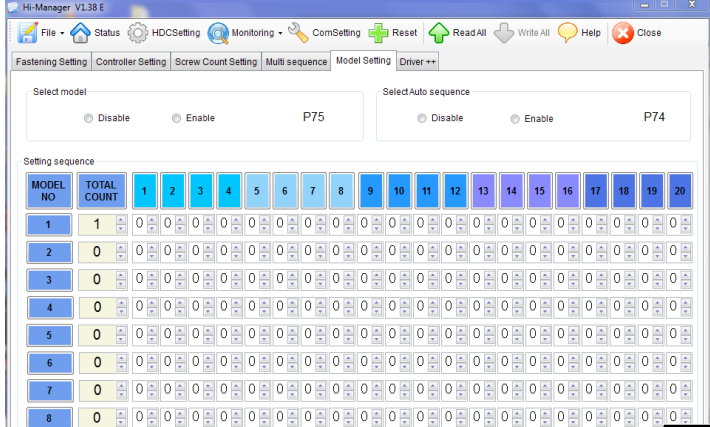
Job settings
(Torque,
Speed, Angle,
Soft start,
Torque tuning)



Real time readings
of all tightenings



Screw counter
process Monitoring



Error Monitoring

Built-in counting program
with torque sequencing

GX Series

Brushless

ESD Free
Conductive body

Built-in control board
Digital speed control
better torque accuracy

Overload
Over Voltage & Heat Protection

Trigger start and reverse button activated
THROUGH SENSORS (Maintenance free)

Brushless Motor (Made in Switzerland)
Designed for heavy duty cycle time

Clutch activated by sensors
(No maintenance)

Shockless Clutch (GXS models)

STANDARD FEATURES

- ✓ Digital speed settings
- ✓ Soft start settings
- ✓ Brushless motor
- ✓ Over current & heat alarms
- ✓ Start, reverse and shut-off activated by sensors

Improve your manufacturing quality!
Lower your maintenance cost!



GX Series

30 Volts • Auto-shut off • CE • XS-40D (FA) Controller 

0,02 to 1,2 NM



VACCUM System (Optional) •

- Higher productivity : thanks to high Brushless motor efficiency !
- Higher comfort : thanks to improved ergonomoy and reduced sound level and heat !
- Increased economy : thanks to brushless motor (triple the life time of the motor).
- Reduced maintenance : the best Mean Time Between Failure (MTBF) ever reached until now (no carbon brush, trigger and reverse contactless switches, over-heat and over-current built in alarms protecting the screwdrivers).
- Increased production quality : thanks to ESD protection, accurate clutch and Softstop clutch Mechanism.
- Noise level : <70 dBA, vibration level : <2,5 m/s²

Micro Torque GX Series *(features SOFT STOP clutch and Digital speed setting)*

| Model | Torque Range (Nm) | Speed rotation (rpm) | Starting system | Drive | Weight (Kg) | Code |
|------------|-------------------|----------------------|-----------------|---------------------------|-------------|-----------|
| GX 035 ESD | 0,02 - 0,34 | 300 to 1100 | Lever | Half moon/shank drive 4mm | 0,24 | 6-1040077 |
| GX 045 ESD | 0,04 - 0,45 | 300 to 700 | Lever | Half moon/shank drive 4mm | 0,24 | 6-1040078 |

STANDARD Series : GX with digital speed and soft start

| Model | Torque Range (Nm) | Speed rotation (rpm) | Starting system | Drive | Weight (Kg) | Code |
|-----------------|-------------------|----------------------|-----------------|----------|-------------|-----------|
| GX 80 ESD V2 | 0,09 - 0,8 | 450 to 1000 | Lever | Hex 1/4" | 0,43 | 6-1021025 |
| GX 120 ESD V2 | 0,2 - 1,2 | 300 to 700 | Lever | Hex 1/4" | 0,43 | 6-1021026 |
| GX 80 P ESD V2 | 0,09 - 0,8 | 450 to 1000 | Push to start | Hex 1/4" | 0,43 | 6-1021027 |
| GX 120 P ESD V2 | 0,2 - 1,2 | 300 to 700 | Push to start | Hex 1/4" | 0,43 | 6-1021028 |

SOFT STOP Series : GXS *(built-in special clutch mechanism providing soft shut-off to protect fragile parts)*

| Model | Torque Range (Nm) | Speed rotation (rpm) | Starting system | Drive | Weight (Kg) | Code |
|----------------|-------------------|----------------------|-----------------|----------|-------------|-----------|
| GXS 80 ESD V2 | 0,09 - 0,8 | 450 to 1000 | Lever | Hex 1/4" | 0,43 | 6-1021020 |
| GXS 120 ESD V2 | 0,2 - 1,2 | 300 to 700 | Lever | Hex 1/4" | 0,43 | 6-1021021 |

TIMER & AUTOREVERSE Series : GXT *(fasten at preset angle/time, Automatic Reverse/forward, stop sequence - ideal for tapping operation, helicoil fastening, pre-assembly...)*

| Model | Torque Range (Nm) | Speed rotation (rpm) | Starting system | Drive | Weight (Kg) | Code |
|----------------|-------------------|----------------------|-----------------|----------|-------------|-----------|
| GXT 80 ESD V2 | 0,09 - 0,8 | 450 to 1000 | Lever | Hex 1/4" | 0,43 | 6-1021036 |
| GXT 120 ESD V2 | 0,2 - 1,2 | 300 to 700 | Lever | Hex 1/4" | 0,43 | 6-1021037 |

FIXTURED SPINDLES Series : GXA *(for automation)*

| Model | Torque Range (Nm) | Speed rotation (rpm) | Starting system | Drive | Weight (Kg) | Code |
|----------------|-------------------|----------------------|-----------------|---------------------------|-------------|-----------|
| GXA 035 ESD V3 | 0,03 - 0,35 | 300 to 1100 | Remote | Half moon/shank drive 4mm | 0,45 | 6-1040073 |
| GXA 045 ESD V3 | 0,04 - 0,45 | 300 to 700 | Remote | Half moon/shank drive 4mm | 0,45 | 6-1040076 |
| GXA 080 ESD V3 | 0,1 - 0,8 | 450 to 1000 | Remote | Hex 1/4" | 0,45 | 6-1040074 |
| GXA 120 ESD V3 | 0,2 - 1,2 | 300 to 700 | Remote | Hex 1/4" | 0,45 | 6-1040075 |

* The whole models of this series are delivered with one tool cable (3m) + sample powerbits.

GX-G Series

40 Volts • Auto-shut off • CE • XS-40D Controller 

0,3 to 4,4 NM



- Higher productivity : thanks to high Brushless motor efficiency !
- Higher comfort : thanks to improved ergonomoy and reduced sound level and heat !
- Increased economy : thanks to brushless motor (triple the life time of the motor).
- Reduced maintenance : the best Mean Time Between Failure (MTBF) ever reached until now (no carbon brush, trigger and reverse contactless switches, over-heat and over-current built in alarms protecting the screwdrivers).
- Increased production quality : thanks to ESD protection, accurate clutch and Softstop clutch Mechanism.
- Noise level : <70 dBA, vibration level : <2,5 m/s²

STANDARD Series : GX with digital speed setting and soft start

| Model | Torque Range (Nm) | Speed rotation (rpm) | Starting system | Drive | Weight (Kg) | Code |
|----------------|-------------------|----------------------|-----------------|----------|-------------|-----------|
| GX 150 ESD-G | 0,3 - 1,47 | 800 to 1700 | Lever | Hex 1/4" | 0,54 | 6-1027447 |
| GX 220 ESD-G | 0,6 - 2,15 | 600 to 1200 | Lever | Hex 1/4" | 0,54 | 6-1027448 |
| GX 450 ESD-G | 1 - 4,41 | 300 to 600 | Lever | Hex 1/4" | 0,54 | 6-1027449 |
| GX 150 P ESD-G | 0,3 - 1,47 | 800 to 1700 | Push to Start | Hex 1/4" | 0,54 | 6-1027450 |
| GX 220 P ESD-G | 0,6 - 2,15 | 600 to 1200 | Push to Start | Hex 1/4" | 0,54 | 6-1027446 |
| GX 450 P ESD-G | 1 - 4,41 | 300 to 600 | Push to Start | Hex 1/4" | 0,54 | 6-1027451 |

SOFT STOP Series : GXS (built-in special clutch mechanism providing soft shut-off to protect fragile parts)

| Model | Torque Range (Nm) | Speed rotation (rpm) | Starting system | Drive | Weight (Kg) | Code |
|-----------------|-------------------|----------------------|-----------------|----------|-------------|-----------|
| GXS 150 ESD-G | 0,3 - 1,47 | 800 to 1700 | Lever | Hex 1/4" | 0,54 | 6-1027452 |
| GXS 220 ESD-G | 0,6 - 2,15 | 600 to 1200 | Lever | Hex 1/4" | 0,54 | 6-1027453 |
| GXS 150 P ESD-G | 0,3 - 1,47 | 800 to 1700 | Push to Start | Hex 1/4" | 0,54 | 6-1077414 |
| GXS 220 P ESD-G | 0,6 - 2,15 | 600 to 1200 | Push to Start | Hex 1/4" | 0,54 | 6-1027454 |

TIMER & AUTOREVERSE Series : GXT (fasten at preset angle/time, Automatic Reverse/forward stop sequence - ideal for tapping operation, helicoil fastening, pre-assembly...)

| Model | Torque Range (Nm) | Speed rotation (rpm) | Starting system | Drive | Weight (Kg) | Code |
|---------------|-------------------|----------------------|-----------------|----------|-------------|-----------|
| GXT 150 ESD-G | 0,3 - 1,47 | 800 to 1700 | Lever | Hex 1/4" | 0,54 | 6-1027460 |
| GXT 220 ESD-G | 0,6 - 2,15 | 600 to 1200 | Lever | Hex 1/4" | 0,54 | 6-1027461 |
| GXT 450 ESD-G | 1 - 4,41 | 300 to 600 | Lever | Hex 1/4" | 0,54 | 6-1027462 |

FIXTURED SPINDLE FOR AUTOMATION (automatic spindle with remote start)

| Model | Torque Range (Nm) | Speed rotation (rpm) | Starting system | Drive | Weight (Kg) | Code |
|------------------|-------------------|----------------------|-----------------|----------|-------------|-----------|
| GXA 150 ESD V2-G | 0,3 - 1,47 | 800 to 1700 | Remote | Hex 1/4" | - | 6-1027465 |
| GXA 220 ESD V2-G | 0,6 - 2,15 | 600 to 1200 | Remote | Hex 1/4" | - | 6-1027466 |
| GXA 450 ESD V2-G | 1 - 4,41 | 300 to 600 | Remote | Hex 1/4" | - | 6-1027467 |

* The whole models of this series are delivered with one tool cable (3m) + sample powerbits.



GY Series

35 Volts • CE • XT-35D Controller 

0,7 to 9,8 NM

- Excellent ratio Weight / Ergonomy / Power
- BLDC motor (maintenance free)
- High speed from 300 to 1500 rpm (3 models)
- Designed for high production rate
- Motor efficiency 85%
- Low Noise, Low Heat, less Energy consumption
- Over Heat, Over Load, Over Voltage protection circuit with LED display
- ESD free with conductive plastic body (less than 10000 hms)
- Noise level : <70 dBA, vibration level : <2,5 m/s²



| Model | Torque Range (Nm) | Speed Rotation (rpm) | Starting system | Drive | Weight (Kg) | Code |
|--------------------------------|-------------------|----------------------|-----------------|----------|-------------|-----------|
| GY35 ESD-G | 0,7 - 3,4 | 500 to 1500 | Lever | Hex 1/4" | 0,8 | 6-1064100 |
| GY50 ESD-G | 1 - 4,9 | 400 to 1100 | Lever | Hex 1/4" | 0,8 | 6-1064102 |
| GY100 ESD-G | 3,9 - 9,8 | 250 to 500 | Lever | Hex 1/4" | 0,85 | 6-1064104 |
| GY35P ESD-G | 0,7 - 3,4 | 500 to 1500 | Push to start | Hex 1/4" | 0,8 | 6-1064101 |
| GY50P ESD-G | 1 - 4,9 | 400 to 1100 | Push to start | Hex 1/4" | 0,8 | 6-1064103 |
| GYA35 ESD-G V2 | 0,7 - 3,4 | 500 to 1500 | Remote | Hex 1/4" | 0,95 | 6-1064105 |
| GYA50 ESD-G V2 | 1 - 4,9 | 400 to 1100 | Remote | Hex 1/4" | 0,95 | 6-1064106 |
| GYA100 ESD-G V2 | 3,9 - 9,8 | 250 to 500 | Remote | Hex 1/4" | 0,95 | 6-1064107 |
| PGY35 pistol ESD-G | 0,7 - 3,4 | 500 to 1500 | Trigger | Hex 1/4" | 0,9 | 6-1078015 |
| PGY50 pistol ESD-G | 1 - 4,9 | 400 to 1100 | Trigger | Hex 1/4" | 0,9 | 6-1078016 |
| PGY100 pistol ESD-G | 3,9 - 9,8 | 250 to 500 | Trigger | Hex 1/4" | 0,95 | 6-1078017 |
| PGY35 T pistol Top Exit ESD-G | 0,7 - 3,4 | 500 to 1500 | Trigger | Hex 1/4" | 0,9 | 6-1078018 |
| PGY50 T pistol Top Exit ESD-G | 1 - 4,9 | 400 to 1100 | Trigger | Hex 1/4" | 0,9 | 6-1078019 |
| PGY100 T pistol Top Exit ESD-G | 3,9 - 9,8 | 250 to 500 | Trigger | Hex 1/4" | 0,95 | 6-1078020 |

* The whole models of this series are delivered with one tool cable (3m) + sample powerbits.

GX FS... Series

30 VDC High Speed • CE • XS-40D Controller 

0,4 to 1,8 NM

- Excellent Ergonomy (smart and small sized)
- BLDC motor (maintenance free)
- High speed from 680 - 1550 rpm (4 models)
- Motor efficiency 85%
- Low Noise, Low Heat level
- Over Heat, Over Load, Over Voltage protection circuit with LED display
- ESD free with conductive plastic body (less than 10000 hms)
- Noise level : <70 dBA, vibration level : <2,5 m/s²



| Model | Torque Range (Nm) | Speed Rotation (rpm) | Starting system | Drive | Weight (Kg) | Code |
|--------------|-------------------|----------------------|-----------------|----------|-------------|-----------|
| GX60 FS ESD | 0,1 - 0,60 | 1550 | Lever | Hex 1/4" | 0,44 | 6-1055960 |
| GX80 FS ESD | 0,2 - 0,80 | 1250 | Lever | Hex 1/4" | 0,44 | 6-1055962 |
| GX120 FS ESD | 0,3 - 1,20 | 1000 | Lever | Hex 1/4" | 0,44 | 6-1055964 |
| GX180 FS ESD | 0,4 - 1,80 | 700 | Lever | Hex 1/4" | 0,44 | 6-1055966 |
| GX60FSP ESD | 0,1 - 0,60 | 1550 | Push to start | Hex 1/4" | 0,44 | 6-1055961 |
| GX80FSP ESD | 0,2 - 0,80 | 1250 | Push to start | Hex 1/4" | 0,44 | 6-1055963 |
| GX120FSP ESD | 0,3 - 1,20 | 1000 | Push to start | Hex 1/4" | 0,44 | 6-1055965 |
| GX180FSP ESD | 0,4 - 1,80 | 700 | Push to start | Hex 1/4" | 0,44 | 6-1055967 |

* The whole models of this series are delivered with one tool cable (3m) + sample powerbits.

GX...BT Series

35 Volts • High Torque/Speed with Built-in speed and soft start selector • CE • XS-35D Controller 

1 to 9,8 NM

- Built Electronics with Embedded Speed and soft start settings
- BLDC motor (maintenance free)
- Low Noise, Low Heat, less Energy consumption
- Overt Heat, Over Load, Over Voltage protection circuit with LED display
- ESD free through bit socket grounded
- Noise level : <70 dBA, vibration level : <2,5 m/s²



| Model | Torque Range (Nm) | Speed Rotation (rpm) | Starting system | Drive | Weight (Kg) | Code |
|----------------|-------------------|----------------------|-----------------|----------|-------------|-----------|
| GX35 BT ESD-G | 1 - 3,4 | 700 to 1500 | Lever | Hex 1/4" | 0,92 | 6-1078005 |
| GX50 BT ESD-G | 2 - 4,9 | 600 to 1050 | Lever | Hex 1/4" | 0,92 | 6-1078006 |
| GX100 BT ESD-G | 4 - 9,8 | 150 to 550 | Lever | Hex 1/4" | 0,92 | 6-1078007 |

* The whole models of this series are delivered with one tool cable (3m) + sample powerbits.



Accessories

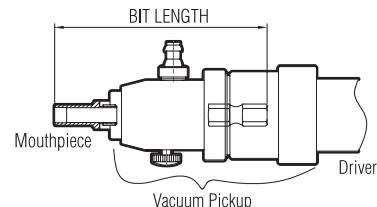
For GX/GX-G Series

Screw Vacuum Pickup



Vacuum pick up

Vacuum pick up assembly is provided without the sleeve (on request).



| | |
|------|--|
| Code | 6-1052500 for GX 30 Volts |
| Code | 6-1000230 for GX 40 Volts |
| Code | 6-1000270 for GX 30 Volts with torque cover ring |

| | |
|------|-------------------------------|
| Code | 6-1084100 for GX150/220 ESD-G |
| Code | 6-1084101 for GX 450 ESD-G |
| Code | 6-1084102 for GX A ESD-G |
| Code | 6-1052501 for GX micro |

Accessories

| | | | | |
|-------------|---|---|----------------------------------|---|
| | | | | |
| Designation | Torque ring cover* | Ring for arm mounting from above | Ring for arm mounting from below | Spiral cable 3,5 m 6-1010413 Standard cable 3,0 m 6-1041225 Standard cable 5,0 m 6-1044703 |
| Code | 6-1041213 for GX 30 Volts 6-1041205 for GX 40 Volts 6-1078800 for GX-G 40 Volts 6-1000232 for GX035-045 6-1000233 for GX...BT, GY, PGY, GX...BT-G, GY-G, PGY-G 6-1077500 for GX...FS | 6-1045804 for GX 30 Volts 6-1045801 for GX/GX-G 40 Volts 6-1045803 for GX...BT 6-1045800 for GY 6-1045802 for HD 6-1045805 for GX...FS | 6-1041501 for GX 30 Volts | |
| | | | | |
| Designation | Programming Lock key** | Programming Lock key firmware upgrade** | | Pistol grip for 40 Volts |
| Code | 6-1044850 | 6-1000222 | | 6-1000231 for GX 30 Volts 6-1010420 for GX/GX-G 40 Volts |

*Not suitable with vacuum pickup. ** Available only for standard series GX 30 & 40 Volts - To be ordered together.

| | | |
|--------------------------|--|---|
| | | |
| Holster 4-1588700 | Cable 5m (GY-PGY) 6-1078888 Cable 3m (GY-PGY) 6-1077200 | Square drive male 1/4" |
| | | Angle head for GX 30 Volts 6-1000226 Angle head for GX150/220-G Volts 6-1000302 Angle head for GX 450-G 6-1000229 Angle head for GX 40 Volts 6-1000227 |
| | | 1/4" female hex. drive |
| | | Angle head for GX...BT/GX...BT-G 6-1033330 Angle head for GY/GY-G 6-1033331 |

PLC Interface

| |
|-----------------------|
| |
| PLC interface U-3B |
| Code 6-1041520 |

- Model U-3B
- Weight : 75g
- Size : 75(W) x 61(D) x 20(H)mm
- Type of signals :
 - open collector by optocoupler (reversed)
 - relay contact N.C
 - Relay contact N.O

Converted signals by U-3B converter from XS-40D

| N° | Wire Color | Signal | XS-40D | Interface converter |
|----|---------------|---------------------|--------|---------------------|
| 1 | ORANGE | Spare | | |
| 2 | ORANGE STRIPE | Torque Up | | |
| 3 | BLUE | Motor Run | | |
| 4 | BLUE STRIPE | Common for 2&3 wire | | |
| 5 | GREEN | Driver Lock | | |
| 6 | GREEN STRIPE | | | |
| 7 | BROWN | No use | | |
| 8 | BROWN STRIPE | Spare | | |

DO Series

Torque range • Auto-shut off • CE • XS-38D Controller 

0,2 to 4,41 NM



- designed for operator comfort : light weight and small sized, full ergonomic design
- designed for productivity : Robust and durable - Suitable with high production rate, Accurate shut-off clutch (+/- 3%), speed control, maintenance free (shut-off operated by magnetic sensor - no wearing)
- designed for quality : ESD free, External torque adjustment scale
- Noise level : <70 dBA, vibration level : <2,5 m/s²

DO Series

| Model | Torque range (Nm) | Rotation speed (rpm) | Starting system | Drive | Weight (Kg) | Code |
|--------------|-------------------|----------------------|-----------------|----------|-------------|-----------|
| DO 250 ESD | 0,2 - 2,45 | 630 or 1050 | Lever | Hex 1/4" | 0,72 | 6-1040036 |
| DO 350 ESD | 0,2 - 3,43 | 460 or 750 | Lever | Hex 1/4" | 0,72 | 6-1040037 |
| DO 450 ESD | 0,3 - 4,41 | 330 or 550 | Lever | Hex 1/4" | 0,72 | 6-1040038 |
| DO 250 P ESD | 0,2 - 2,45 | 630 or 1050 | Push to Start | Hex 1/4" | 0,72 | 6-1040040 |
| DO 350 P ESD | 0,2 - 3,43 | 460 or 750 | Push to Start | Hex 1/4" | 0,72 | 6-1040041 |
| DO 450 P ESD | 0,3 - 4,41 | 330 or 550 | Push to Start | Hex 1/4" | 0,72 | 6-1040042 |

Standard equipment (supplied with the tool)

- Power supply cable 3 m
- 2 carbon brushes
- 2 bits Philips n° 0, n° 1
- Clutch adjustment springs
- Suspension ring
- User manual

Accessories & Wear spare parts

| | | | | | | | |
|-------------|---|---|---|---|--|---|---|
| |  |  |  |  |  |  |  |
| Designation | Carbon brush | Brush cap | Torque ring cover | Ring for arm mounting | Extra long cable 5 m | Spiral cable 3,5 m | Pistol Grip Kit |
| Code | 6-1041220 | 6-1041203 | 6-1041211 | 6-1041502 | 6-1044703 | 6-1010413 | 6-1010412 |



GA Series

Torque range • Auto-shut off • CE • XS-38D Controller 

0,08 to 1,18 NM



- designed for operator comfort : light weight and small sized, full ergonomic design
- designed for productivity : Accurate shut-off clutch (+/- 3%), speed control, maintenance free (shut-off operated by magnetic sensor - no wearing)
- designed for quality : ESD free, External torque adjustment scale, soft start, double hit mode.
- Noise level : <70 dBA, vibration level : <2,5 m/s²

GA Series

| Model | Torque range (Nm) | Rotation speed (rpm) | Drive | Starting system | Weight (Kg) | Code |
|--------------|-------------------|----------------------|----------|-----------------|-------------|-----------|
| GA 150 ESD | 0,08 - 0,78 | 700 or 1000 | Hex 1/4" | Lever | 0,31 | 6-1040011 |
| GA 180 ESD | 0,1 - 1,18 | 450 or 700 | Hex 1/4" | Lever | 0,31 | 6-1040012 |
| GA 150 P ESD | 0,08 - 0,78 | 700 or 1000 | Hex 1/4" | Push to start | 0,31 | 6-1040013 |
| GA 180 P ESD | 0,1 - 1,18 | 450 or 700 | Hex 1/4" | Push to start | 0,31 | 6-1040014 |

Standard equipment (supplied with the tool)

- Power supply cable 3 m
- 2 carbon brushes
- 2 bits Philips n° 0, n° 1
- Clutch adjustment springs
- Suspension ring
- User manual

Accessories & Wear spare parts

| | | | | | | | |
|-------------|---|---|---|---|--|---|---|
| |  |  |  |  |  |  |  |
| Designation | Carbon brush | Brush cap | Torque ring cover | Ring for arm mounting | Extra long cable 5 m | Spiral cable 3,5 m | Screw vacuum Pick-up |
| Code | 6-1041219 | 6-1041203 | 6-1041212 | 6-1041500 | 6-1044703 | 6-1010413 | 6-1052500 |

Vacuum pick up assembly is provided without the sleeve (on request). The recommended bit length is 44 mm long. Feeting size : diameter 4 mm.

Controllers

SMPS Technology Inside!



- High productivity : Thanks to the unique SMPS technology (switching modulation), the connected screwdriver always delivers constant rotation speed and fastening force even for demanding fastening process (self-tapping tightening, soft joint....).
- Comfort : Light and compact.
- Durability : Built-in Over heat and Over Current protection prevent the screwdriver from damage or bad use.
- Economy : Maintenance free.
- Quality : Easy monitoring of your fastenings thanks to torque reached signal output, start and stop signal outputs, selectable softstart, Screwdriver lock signal input for PLC (prevents screwdrivers activation until PLC input signal).

| Model | Power (AC) (V) | Output voltage low (V) | Output voltage high (V) | Rated output (A) | Weight (Kg) | Size (mm) | For screwdrivers 30 and 40 Volts | Code |
|-----------|----------------|------------------------|-------------------------|------------------|-------------|-----------|----------------------------------|-----------|
| XS-40D | 220 | 30 | 40 | 3 | 0,86 | 90x150x55 | GX, GX-G, GX...FS Series | 6-1040065 |
| XS-40D FA | 220 | 30 | 40 | 3 | 0,86 | 90x150x55 | GXA, GXA-G Series | 6-1040080 |

SMPS Technology Inside!



- High productivity : Thanks to the unique **SMPS technology** (switching modulation), the connected screwdriver always delivers constant rotation speed and fastening force even for demanding fastening process (self-tapping tightening, soft joint....)
- Comfort : Light weight and compact
- Durability : Built-in Over heat and Over Current protection prevent the screwdriver from damage or bad use
- Economy : Maintenance free
- Quality : Easy monitoring of your fastenings thanks to torque reached signal output, start and stop signal outputs, selectable softstart, Double-hit mode for soft joint, Screwdriver lock signal input for PLC (prevents screwdrivers activation until PLC input signal).

| Model | Power (AC) (V) | Output voltage low (V) | Output voltage high (V) | Rated output (A) | Max. output (A) | Weight (Kg) | Size (mm) | For screwdrivers | Code |
|--------------|----------------|------------------------|-------------------------|------------------|-----------------|-------------|-----------|------------------------|-----------|
| XT-30D-V2 | 220 | 20 | 30 | 1,2 | 2 | 0,33 | 70x130x40 | GA Series | 6-1099550 |
| XS-38D V4.3* | 220 | 30 20 | 38 30 | 2,5 | 5 | 0,7 | 90x150x55 | DO Series GA Series | 6-1040063 |



Controllers

- High productivity : Thanks to the unique SMPS technology (switching modulation), the connected screwdriver always delivers constant rotation speed and fastening force even for demanding fastening process (self-tapping tightening, soft joint....).
- Comfort : Light and compact.
- Durability : Built-in Over heat and Over Current protection prevent the screwdriver from damage or bad use.
- Economy : Maintenance free.
- Quality : Easy monitoring of your fastenings thanks to torque reached signal output, start and stop signal outputs, selectable softstart, Screwdriver lock signal input for PLC (prevents screwdrivers activation until PLC input signal).



| Model | Power (AC) V | Output voltage | Rated output | Weight (Kg) | Size (mm) | For Screwdrivers | Code |
|--------|--------------|----------------|--------------|-------------|------------|-----------------------------|-----------|
| XS-35D | 220 | 35 | 4 | 1,2 | 130x188x65 | GX... BT, GX... BT-G series | 6-1077420 |

XT-35D Advanced controller features

- Auto recognition of the screwdrivers
- Password protection
- Forward and Reverse Speed selectable
- Soft start for Forward and Reverse mode (from 30 to 200 Ms)
- Programmable angle
- Multi hit function for soft joint (from 1 to 10 shut off clutch)
- Multi sequence programm (as GXT model)
- Various Display Settings
- I/O interface
- RJ input for Scout II poka yoke Controller, Posi Control



| Model | Power (AC) V | Output voltage | Rated output | Weight (Kg) | Size (mm) | For Screwdrivers | Code |
|--------|--------------|----------------|--------------|-------------|------------|--|-----------|
| XT-35D | 230 | 35 | 4 | 2,4 | 95x221x143 | GY..., GY-G series PGY..., PGY-G series | 6-1077421 |

SCOUT Poka Yoke

SCOUT Poka yoke controller (Suitable with XS-38D, XS-38D FA, XS-40D, XS-35D, XT-35D)

**Prevents screw fastening errors!
Supervised process!**



Set up to 8 tightening programs

Tightening monitoring :

- Detects cross threading, omissions, double tightening, unfinished rundown.
- Screws counting, OK-NG fastening, OK-NG cycle.
- Buzzer Alert, displays error conditions.

Sequence management :

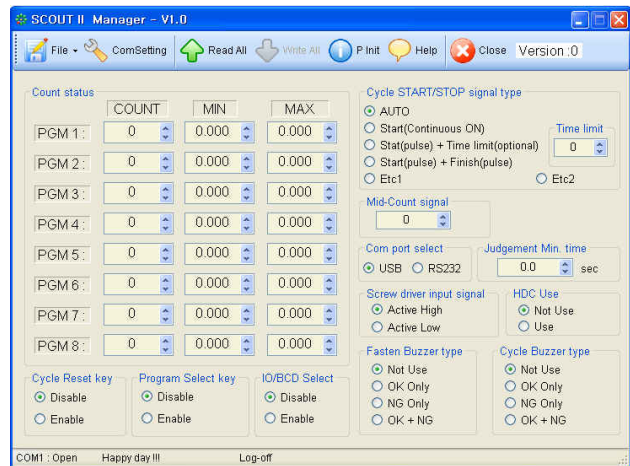
- Parts detection, parts OK-NG sorting through PLC.
- Storage of several tightening settings with the parameter mode.

| Model | Key features | Inputs features | Outputs features | Code |
|----------|---|---|---|------------------|
| SCOUT II | <ul style="list-style-type: none"> > Password protection > Display of total fastened screw number > Display of remaining screw number > Built-in fastening time measurement function > Alarms: leds + several buzzers > Easy programming by scroll menu and self learning mode > Wall mountable | <ul style="list-style-type: none"> > Cycle start > Driver lock/unlock | <ul style="list-style-type: none"> > OK > NG > Buzzer alarm > Cycle end | 6-1074000 |

Delivered with :

- Connection cable on controller
- I/O connection cable

**Easy programming thanks
to the Scout II manager
software !**





8, avenue Gutenberg - CS 50510
78317 Maurepas Cedex - France
Tél. : +33 1 30 66 41 20 • Fax : + 33 1 30 66 41 79
export@doga.fr



Nous travaillons constamment à l'amélioration de nos produits. De ce fait, les dimensions et indications portées dans cette brochure peuvent parfois ne pas correspondre aux dernières exécutions. De convention expresse, nos ventes sont faites sous bénéfice de réserve de propriété (les dispositions de la loi du 12/5/80 trouvent donc toute leur application).